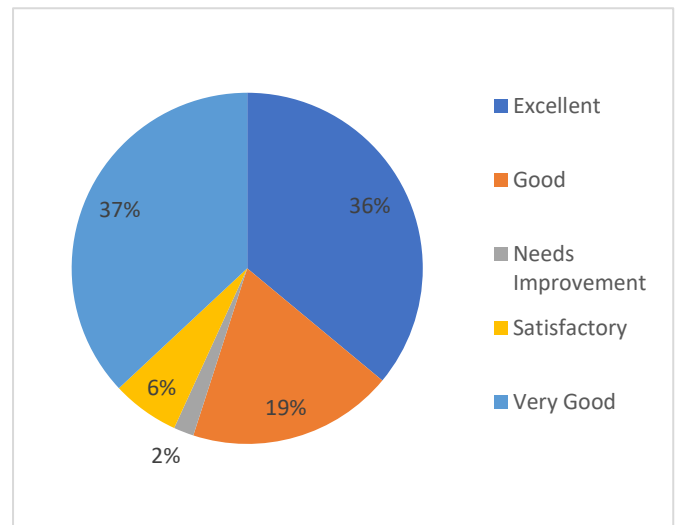
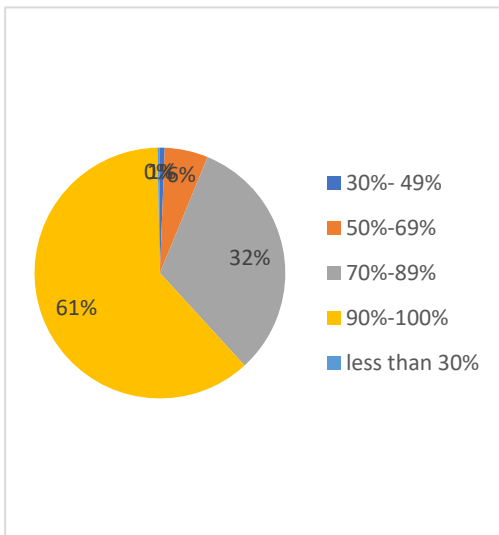




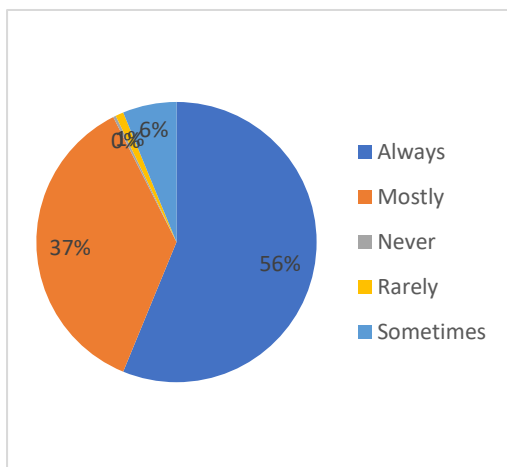
Student Analysis 2021-22

How much percent of the syllabus (overall all subjects) was completed during the Second Term of academic year 2021-22

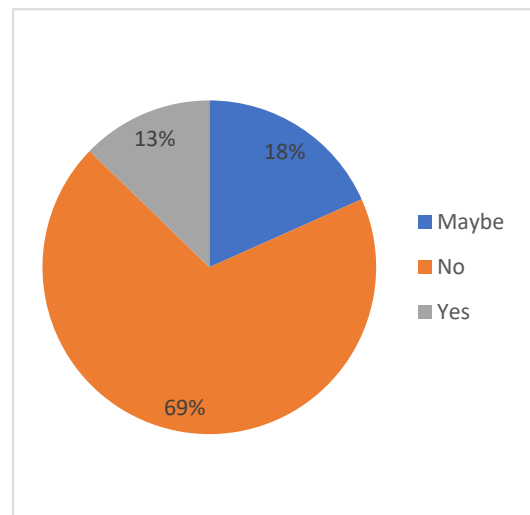


What is your opinion about the teaching methods of your subject teachers

Did the teachers prepare well for the classes?

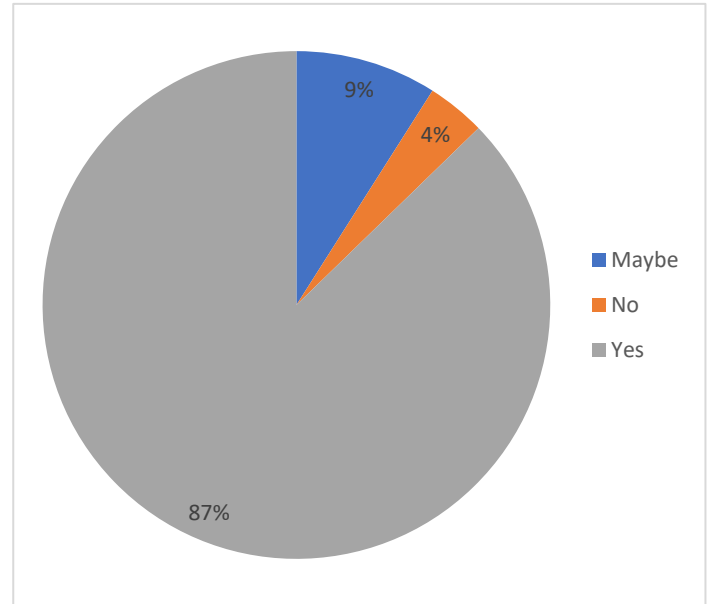
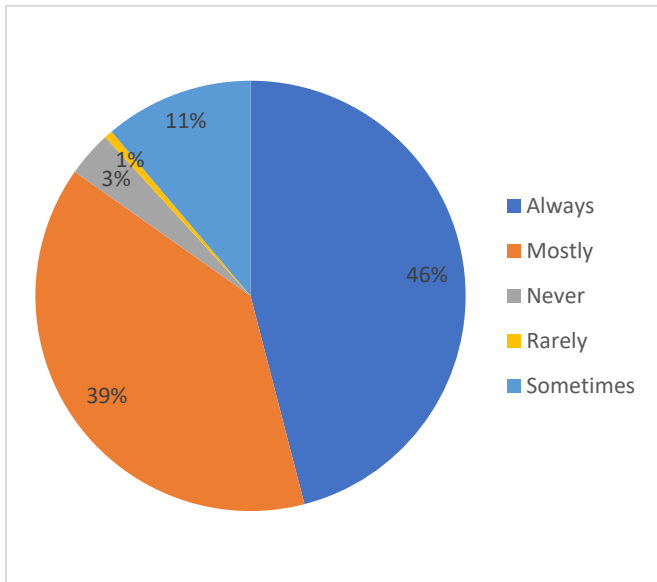


Do you feel some changes are needed in Teaching Learning methods?



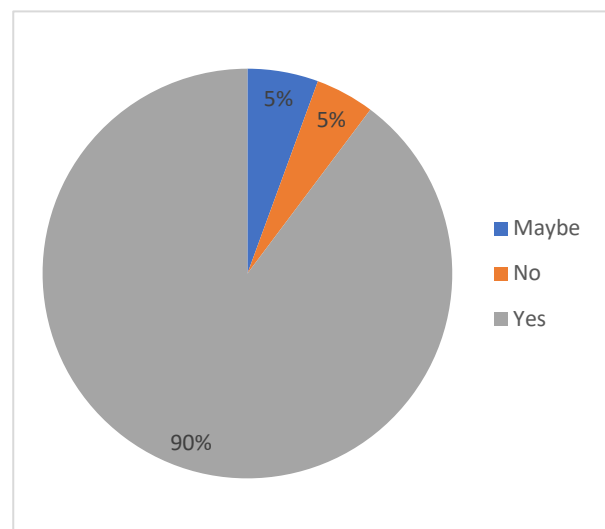
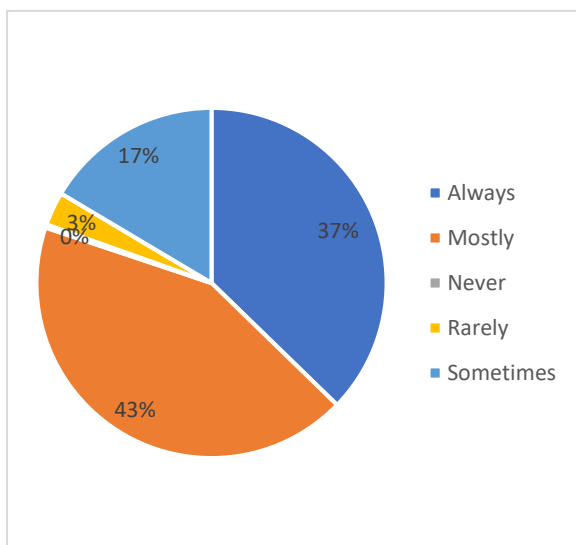


Do the teachers illustrate the concepts through examples and applications.



Do the teachers inform you about your expected competencies, course outcomes and programme outcomes?

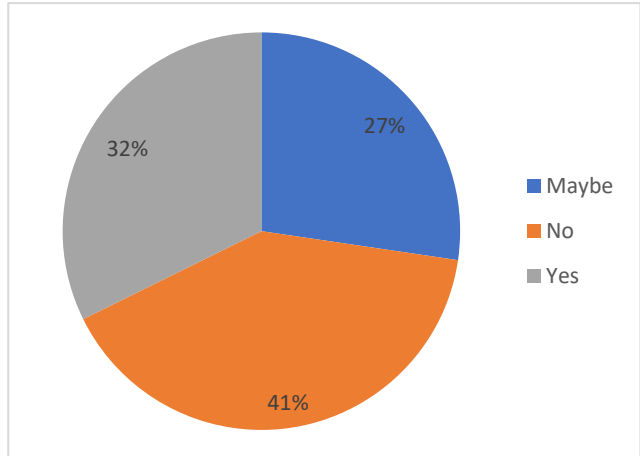
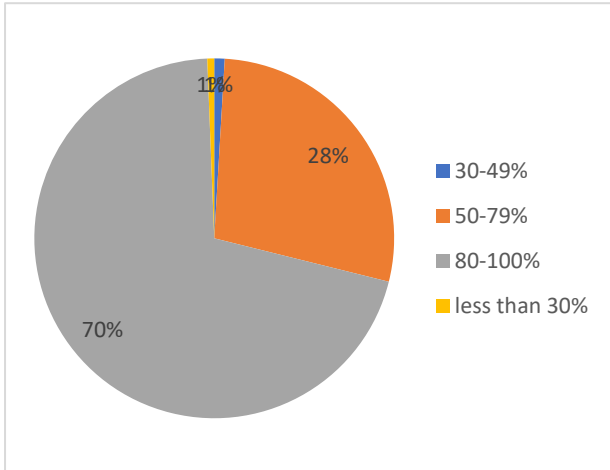
The institute/ teachers use student centric methods, such as experiential learning, participative learning and problem solving methodologies for enhancing learning



Does the college takes active interest in promoting student welfare opportunities like scholarship , Guest lecture, NSS,DLLE, Career info etc.

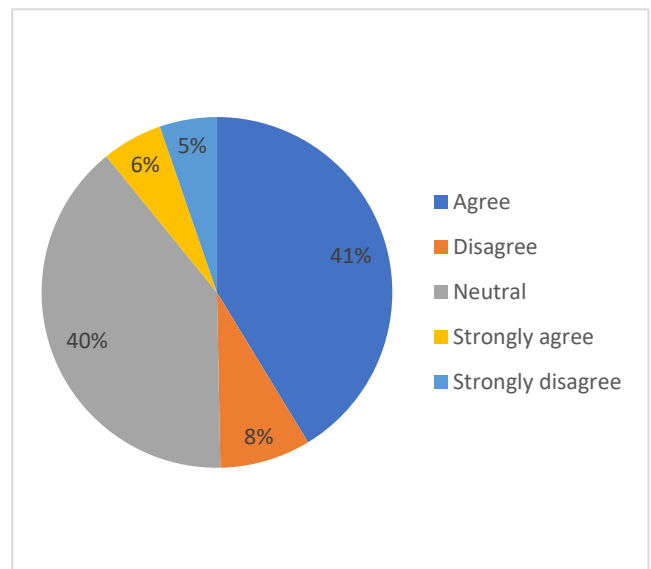
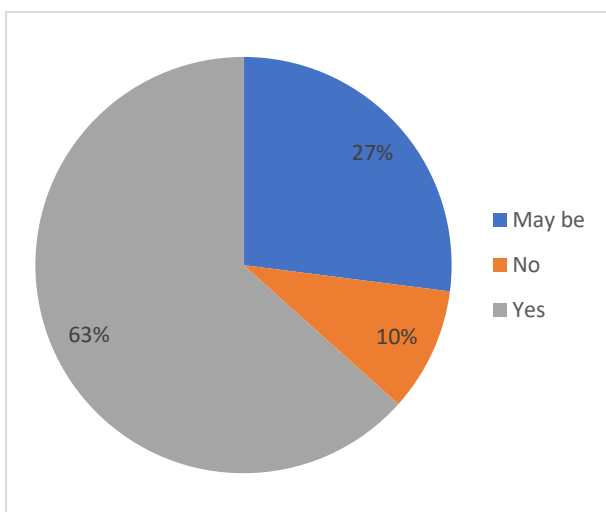


Percentage of Fairness of the internal evaluation process by the teachers?



Do you think college office needs to improve its functioning ?

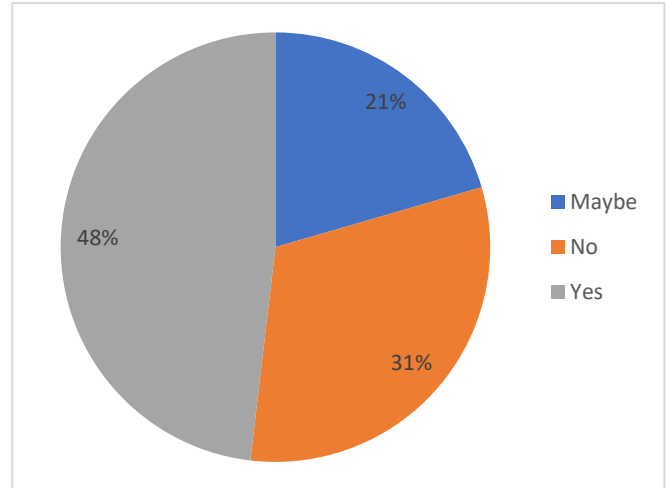
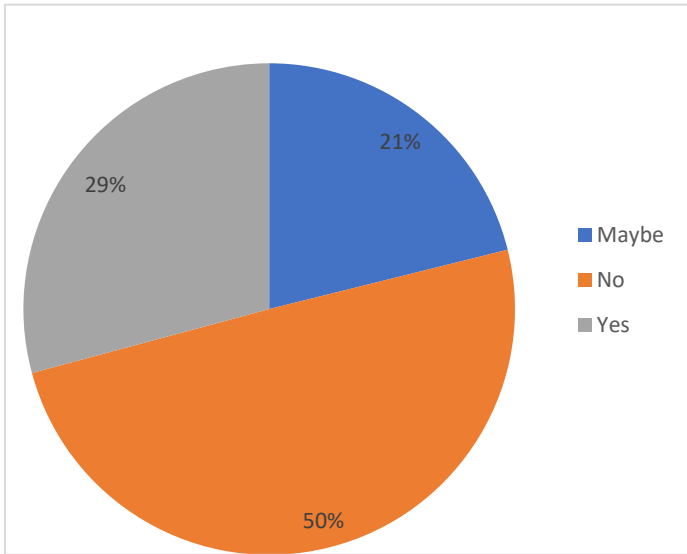
Do you think college office gives necessary support to student's need ?



Are the Gymkhana/Gymnasium facilities adequate?

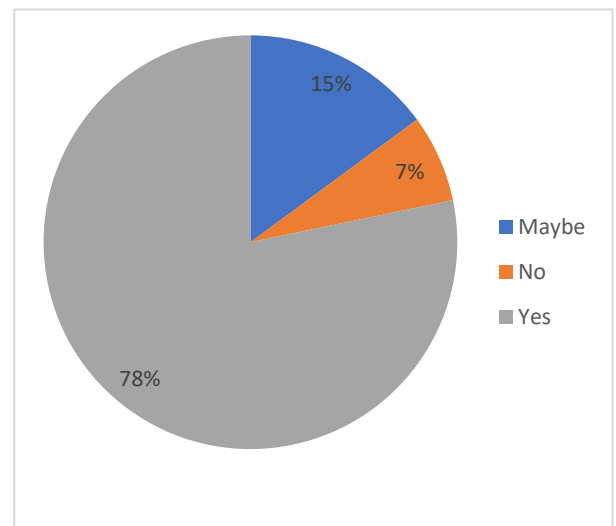
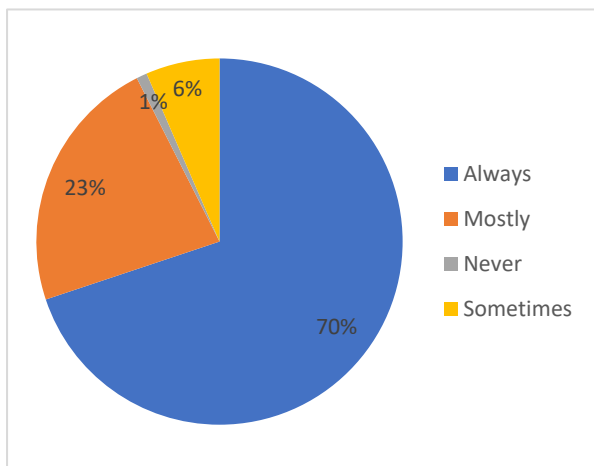


Do you feel that some improvements are required in college library?



Did you receive E Resource learning Orientation/Guidance from Library

Teachers encourage you to participate in extracurricular activities.

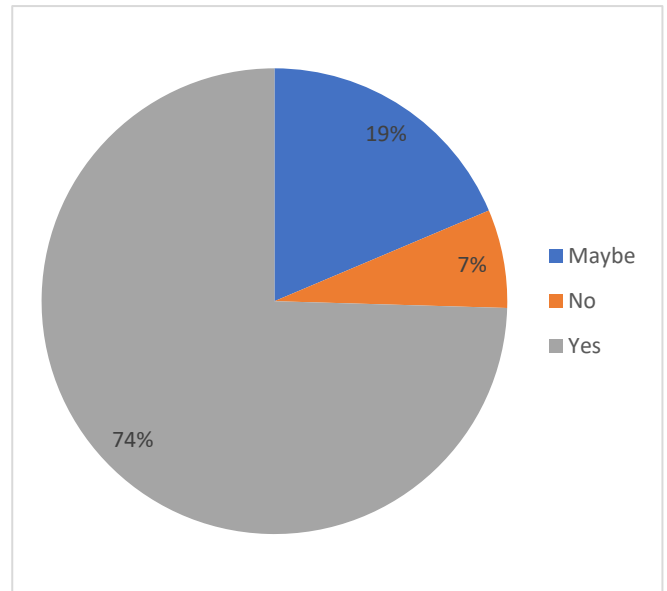
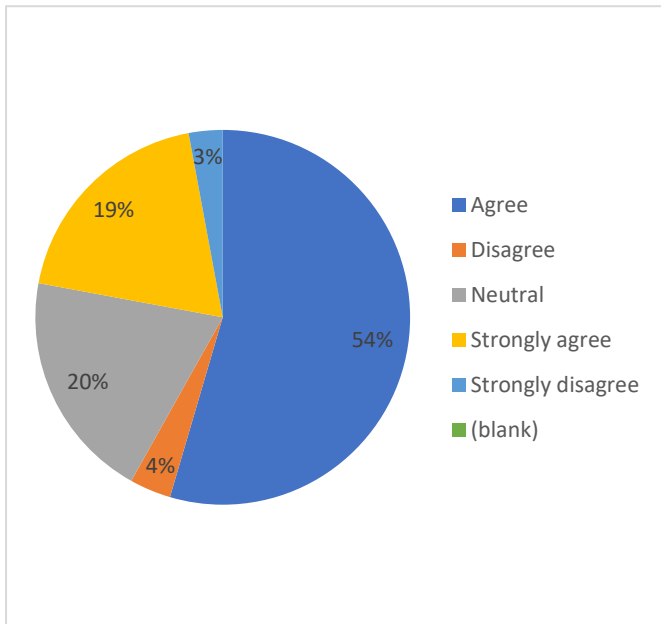


The teachers identify your strengths and encourage you with providing right level of challenges.



Daar-ul-Rehmat Trust's
A.E.KALSEKAR DEGREE COLLEGE
(Permanent Affiliated to University of Mumbai)
Kausa - Mumbra Dist : Thane
Accredited with B++ Grade by NAAC
ISO Certified 9001:2015

Has the Exam. Committee provided time to time guidelines/helplines no. and resolved grievance,if any?



The teaching and mentoring process in your institution facilitates your personal, social and emotional growth